

WARNINGS & SAFETY INFORMATION:

PLEASE READ CAREFULLY AND KEEP A COPY ON PROPERTY FOR FUTURE REQUIREMENTS!

General Safety Information

- To reduce the risk of death, personal injury or property damage from fire, electric shock, falling parts, cuts/abrasions, and other hazards read all warnings and instructions included with and on the fixture box and all fixture labels.
- Before installing, servicing, or performing routine maintenance upon this equipment, follow these general precautions.
- Commercial installation, service and maintenance of luminaires should be performed by a qualified licensed electrician.
- For Residential installation: If you are unsure about the installation or maintenance of the luminaires, consult a qualified licensed electrician and check your local electrical code.
- DO NOT INSTALL DAMAGED PRODUCT!
- This fixture is intended to be connected to a properly installed and grounded UL listed junction box.

WARNING:

RISK OF ELECTRICALSHOCK

- Turn off electrical power at fuse or circuit breaker box before wiring fixture to the power supply.
- Turn off the power when you perform any maintenance.
- Verify that supply voltage is correct by comparing it with the luminaire label information.
- Make all electrical and grounded connections in accordance with the National Electrical Code and any applicable local code requirements.
- All wiring connections should be capped with UL approved wire connectors.

CAUTION:

RISK OF INJURY

- Wear gloves and safety glasses at all times when removing luminaire from carton, installing, servicing or performing maintenance.
- Avoid direct eye exposure to the light source while it is on.
- Account for small parts and destroy packing material, as these may be hazardous to children.

CAUTION:

RISK OF FIRE

- Keep combustible and other materials that can burn away from luminaire and lamp/lens.
- MIN 90°C SUPPLY CONDUCTORS.

Illustrations are for installation purposes only. They may not match completely the fixture purchased as we are making continuous improvements. Consult either website or factory if you should have any questions.

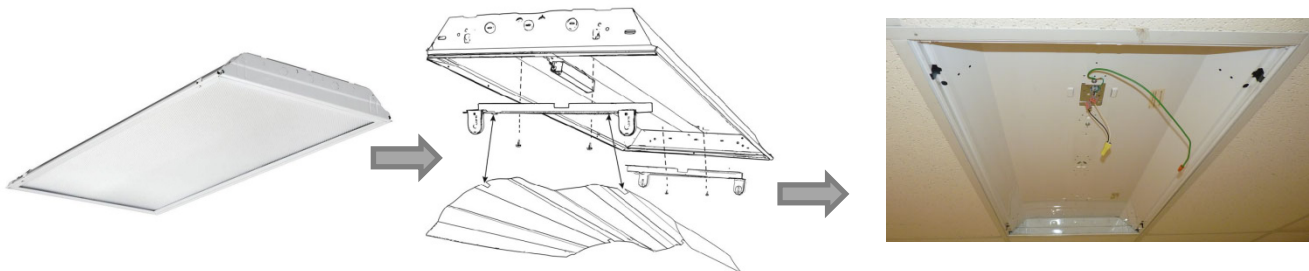
KuDo 6™



Included in this kit you should find:

1. KuDo 6™ Light fixture body with mounting bolt hinges.
2. 2x T-Bar Mounting “CALI LIFT RAILS”

***Fasteners and seismic wire (by others)*



Step 1. To avoid electrical shock, disconnect power to old fixture.

Step 2. Remove Lens or louver, reflector, electrical cover channel, sockets and socket bars. Consult local codes if it is legal before you leave old fluorescent ballasts in place.

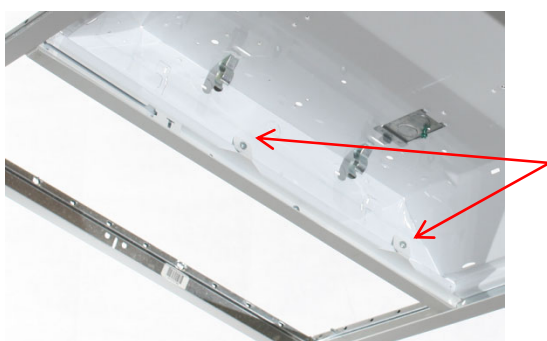
Step 3. Your new KuDo 6™ is provided with 2x “CALI LIFT RAILS” as shown to the right. Each rail has slotted tracks and two screw tabs. Orient with screw tabs up when placing on T-Bar under old fixture.



Step 4. Lift the 2ft end of the old fluorescent fixture up enough to slide one end of the LIFT RAIL under and into the corner where 4ft and 2ft T-Bar meet. While keeping one end of the LIFT RAIL in the corner, carefully slide the opposite end of the LIFT RAIL into the other corner. Once the LIFT RAIL is tight to the wall of the 2ft T-Bar, lower the old fixture down on top of the LIFT RAIL.

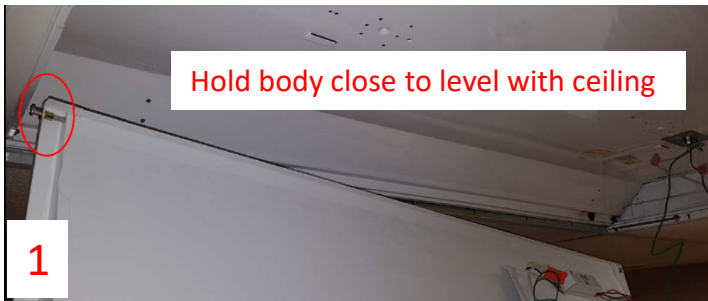


Fasten LIFT RAIL to the T-Bar by drilling a self-tapping screw through one of the pilot holes provided in the middle of the LIFT RAIL. Repeat Step 4. for the second LIFT RAIL on the opposite side.

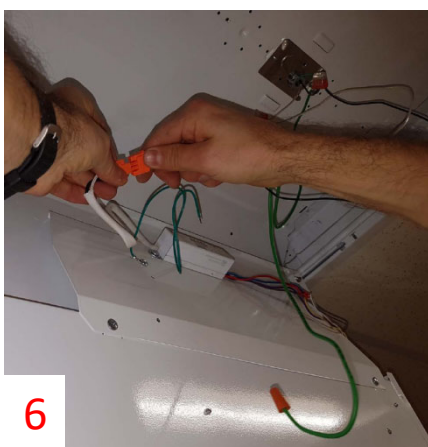


Check to make sure the old fixture is connected to the building structure with No. 12 hanger wire as per code. Permanently fasten the “LIFT RAILS” by drilling a self-tapping screw through both screw tabs into the old troffer housing as shown left. Do this for both Left and Right “LIFT RAILS”.

KuDo 6™



Step 5. (1) Lift the KuDo 6™ fixture body so that the back is facing towards you with hinge bolts at top left and top right corners. Angle the fixture body so that the top left hinge bolt HEAD enters the LIFT RAIL slot (2). After entry, slide partially towards the end of the slot (3). NOTE: The fixture body must be held close to parallel with the ceiling and angled slightly in order to allow the top right hinge bolt HEAD to enter the opposite LIFT RAIL in the same fashion (4) (5).

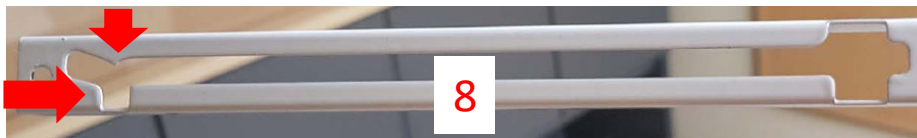


Step 6. After the top left and top right hinge bolt HEADS have been installed into the LIFT RAIL slots, the fixture body may be allowed to hang for hands free splicing. Fasten the aircraft cable safety tethers provided at both ends of the KuDo 6™ body to the old troffer housing prior to splicing. Proceed with wire splicing with ground wires being spliced first. Use the power disconnect provided.

KuDo 6™



Step 7. After splicing is complete, bundle the wires neatly so that they will not bind between fixture and T-Bar as you raise the fixture in place. Raise the fixture slowly upward as it pivots on the hinge bolts near the end of the LIFT RAILS (7). Gently lift the hinge side of the fixture body to slide all the way up the end of the slots on the LIFT RAILS. This will allow the opposite edge of the KuDo 6™ closest to you to clear the T-Bar face. Raise the non-hinge side above the T-Bar and slowly pull back until you feel the hinge bolts drop into the locking slot (8). The KuDo 6™ may now be allowed to rest on the T-Bar (9).

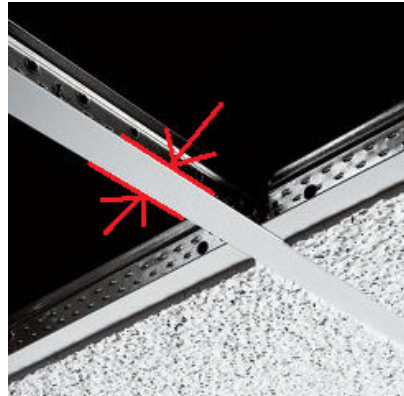


Step 8. Remove protective plastic from lens and dispose. If you notice any debris on the lens, remove the lens and clean the debris. Replace lens.



NARROW GRID CEILING ("L" Side Rail) ACCESSORY

KuDo 6™ was developed for standard T-Bar grid ceilings with 15/16" face. For narrow grid ceilings that offer faces less than 15/16", an "L" Side Rail accessory is offered.



Two "L" shaped side rails are provided. NOTE: these are to be installed first. The "L" side rails sit atop the 4ft sides of the grid and are held in place at the ends by the "Lift" Rails. After "L" side rails are installed, proceed to step 3. of the installation found on page 2.

