

# KuDo 6T™



## WARNINGS & SAFETY INFORMATION:

PLEASE READ CAREFULLY AND KEEP A COPY ON THE PROPERTY FOR FUTURE REFERENCE!

### General Safety Information

- To reduce the risk of death, personal injury or property damage from fire, electric shock, falling parts, cuts/abrasions, and other hazards read all warnings and instructions included with and on the fixture box and all fixture labels.
- Before installing, servicing, or performing routine maintenance upon this equipment, follow these general precautions.
- Commercial installation, service and maintenance of luminaires should be performed by a qualified licensed electrician.
- For Residential installation: If you are unsure about the installation or maintenance of the luminaires, consult a qualified licensed electrician and check your local electrical code.
- DO NOT INSTALL DAMAGED PRODUCT!
- This fixture is intended to be connected to a properly installed and grounded UL listed junction box.

### WARNING:

#### RISK OF ELECTRICALSHOCK

- Turn off electrical power at fuse or circuit breaker box before wiring fixture to the power supply.
- Turn off the power when you perform any maintenance.
- Verify that supply voltage is correct by comparing it with the luminaire label information.
- Make all electrical and grounded connections in accordance with the National Electrical Code and any applicable local code requirements.
- All wiring connections should be capped with UL approved wire connectors.

### CAUTION:

#### RISK OF INJURY

- Wear gloves and safety glasses at all times when removing luminaire from carton, installing, servicing or performing maintenance.
- Avoid direct eye exposure to the light source while it is on.
- Account for small parts and destroy packing material, as these may be hazardous to children.

### CAUTION:

#### RISK OF FIRE

- Keep combustible and other materials that can burn away from luminaire and lamp/lens.
- MIN 90°C SUPPLY CONDUCTORS.

***Illustrations are for installation purposes only. They may not match completely the fixture purchased as we are making continuous improvements. Consult either website or factory if you should have any questions.***

# KuDo 6T™



Enclosed you should find one complete KuDo 6T™ new troffer consisting of:

1. KuDo 6T™ Light fixture body with mounting bolt hinges.
2. 2x T-Bar Mounting “LIFT RAILS”
3. 1x Driver Cover with splice plate for new T-Bar installation.

*\*\*Fasteners and 12 gauge hanger wires by others.*

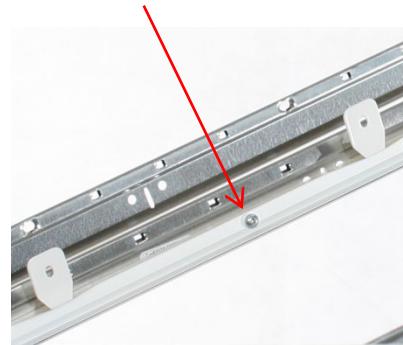
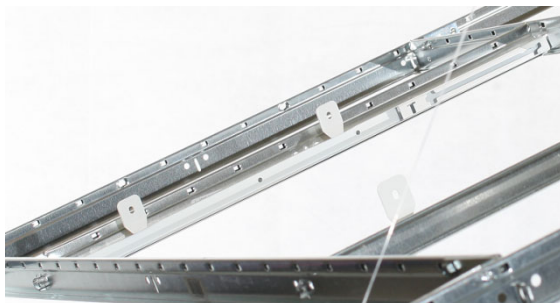
**Step 1.** To avoid electrical shock, disconnect power to old fixture.

**Step 2.** Carefully remove the fixture from the packaging. Inspect for any defects before proceeding.

**Step 3.** Your new KuDo 6T™ is provided with 2x “CALI LIFT RAILS” as shown to the right. Each rail has slotted tracks and two screw tabs. Orient with screw tabs up when placing on T-Bar under old fixture.



**Step 4.** Place the two LIFT RAILS onto the 2FT ends of the T-Bar for either 2'x4' or 2'x2' grids. Place onto the 1FT ends for a 1'x4' grid. The LIFT RAILS should fit snug to the bottom corner of the T-Bar as shown (below left). Fasten the LIFT RAIL to the T-Bar with a self drilling screw to secure through one of the three pilot holes provided (below right).



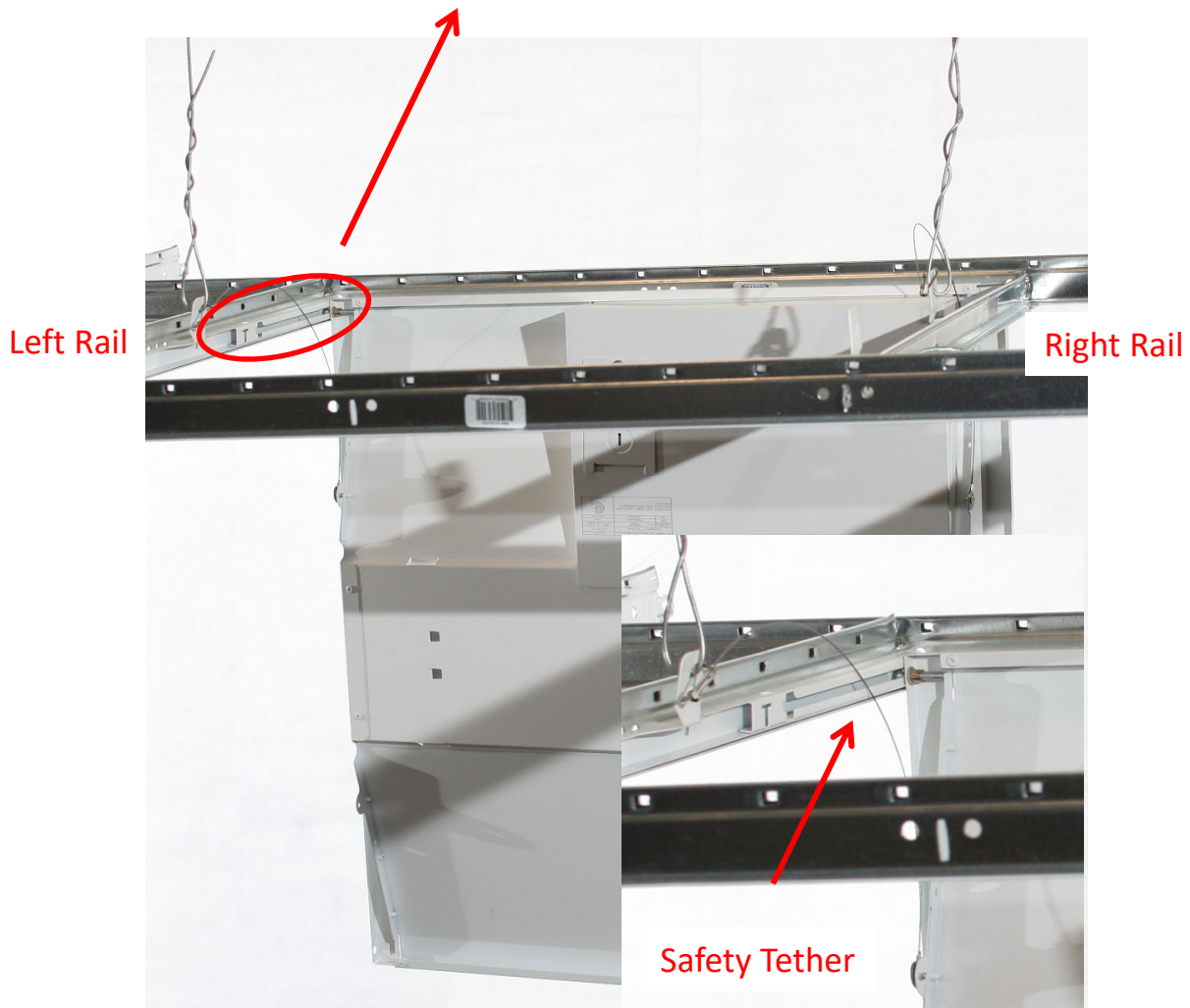
**Step 5.** For seismic jurisdictions you may be required to Secure No. 12 hanger wire from each “LIFT RAIL” to the building structure (below). Please follow national and local building codes.



# KuDo 6T™



**Step 6.** Lift the KuDo 6T™ body so that the back is facing towards you with hinge bolts at top left and top right corners. Angle the body so that the top left hinge bolt HEAD enters the Left “LIFT RAIL” “Entry Slot” (below). After the bolt head passes through the “Entry Slot”, slide it part way toward the “Drop Slot” end. You may now enter the top right hinge bolt HEAD through the Right “LIFT RAIL” “Entry Slot”. Slide both bolt heads towards the “Drop Slot” end and let the body hang down.



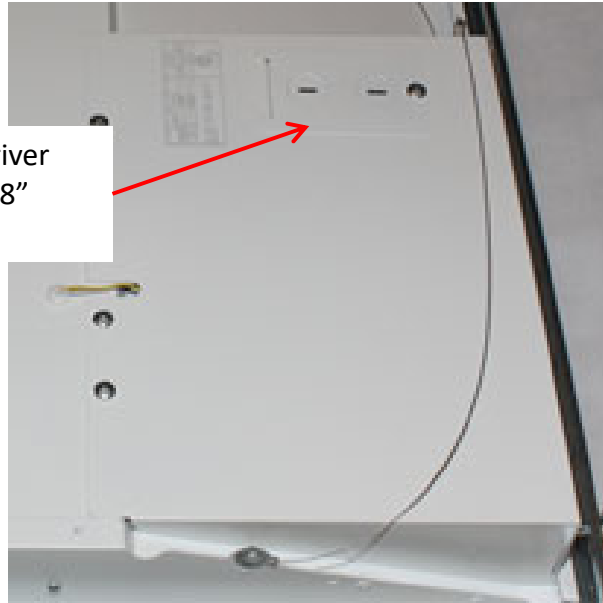
**Step 7.** Fasten both aircraft cable safety tethers located on KuDo 6T™ body to the No. 12 Hanger Wire (above inset).

# KuDo 6T™



**Step 8.** With KuDo 6T™ body tethered to the hanger wire and hanging freely you may now splice building power. The KuDo 6T™ is equipped with a driver cover that has a removable splice plate with two 7/8" knockouts. Access ground and power disconnect by removing splice plate. Check to make sure building voltage matches voltage offered by the KuDo 6T™ provided on the safety label. Splice ground wire before splicing building power wires.

KuDo 6T™ new troffer includes driver cover with splice plate and two 7/8" knockouts .



**Step 7.** Raise the fixture slowly upward as it pivots on the hinge bolts near the end of the LIFT RAILS. Gently lift the hinge side of the fixture body to slide all the way up the end of the slots on the LIFT RAILS. This will allow the opposite edge of the KuDo 6T™ closest you to clear the T-Bar face. Raise the non-hinge side above the T-Bar and slowly pull back until you feel the hinge bolts



drop into the "Drop Slot". The KuDo 6T™ may now be allowed to rest on the T-Bar (9).



# KuDo 6T™

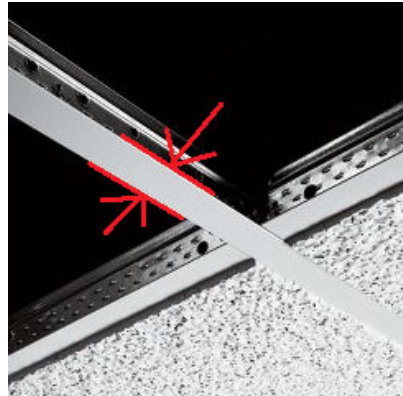


**Step 10.** Remove protective plastic from lens and dispose. If you notice any debris on the lens, remove the lens and clean the debris. Replace lens.



## NARROW GRID CEILING ("L" Side Rail) ACCESSORY

KuDo 6T™ was developed for standard T-Bar grid ceilings with 15/16" face. For narrow grid ceilings that offer faces less than 15/16", an "L" Side Rail accessory is offered.



Two "L" shaped side rails are provided. NOTE: these are to be installed first. The "L" side rails sit atop the 4ft sides of the grid and are held in place at the ends by the "Lift" Rails. After "L" side rails are installed, proceed to step 3. of the installation found on page 2.

