

INTRODUCTION

The iPaRK 6™ luminaire is designed to replace HID and Fluorescent products in stairwell and parking garage lighting applications. The iPaRK 6™ features provide highly efficient low glare lighting, extreme power savings, along with low installation and maintenance costs. The sleek profile, flexible design features, and simple mounting process make the iPaRK 6™ a perfect choice for engineers, contractors, and end users.

CONSTRUCTION

Extremely robust extruded aluminum core optical mounting platform and heat sink also provides structural rigidity and allows precision placement of critical optical components for wide throw optics. Sheet aluminum die formed housing gives open access for easy installation to facility structure as well as core optical and lens fixation. Die formed tool-less sensor mounting and access panel.


LOW GLARE VOLUMETRIC OPTICS

The iPaRK 6™ optical assembly consists of highly reflective specular aluminum die formed reflector along with semi-diffuse highly efficient PMMA injection molded lens. Light distribution is optimized to achieve high angle brightness on walls and between vehicles while maintaining visual comfort. For higher ceiling applications, downward throw optics are available.

PERFORMANCE

iPaRK 6™ luminaires offer >115 Lumens/Watt @ 120/277V & 120/347V; CRI >80; THD <10%; PF >99. Projected life beyond 100,000 hours. LED modules and drivers are offered with a standard 5-year warranty based on performance under normal conditions (consult warranty for details).

FLEXIBLE ELECTRICAL STANDARD FEATURES

- For Canada, iPaRK 6™ includes 120/347V
- For USA, iPaRK 6™ includes 120/277V
- Disconnect provided on input power wires
-  BLU Ecosystem™ compliant

MOUNTING

Includes two yoke mounting straps.

Optional Unimo™ Universal Mounting Bracket to make installation simple and efficient. The Unimo™ is suitable for surface mounting on-or-off of electrical junction boxes or pendent mounting from conduit.

CONTROLS

Optional Hidden Wireless Dimming Occupancy Sensor.

COMPLIANCE

The iPaRK 6™ is cCSAus listed for damp locations and -40°C to +40°C ambient environments. RoHS compliant, and LED modules comply with IESNA LM-79 and LM-80 standards.

NOTE: Specifications subject to change without notice.



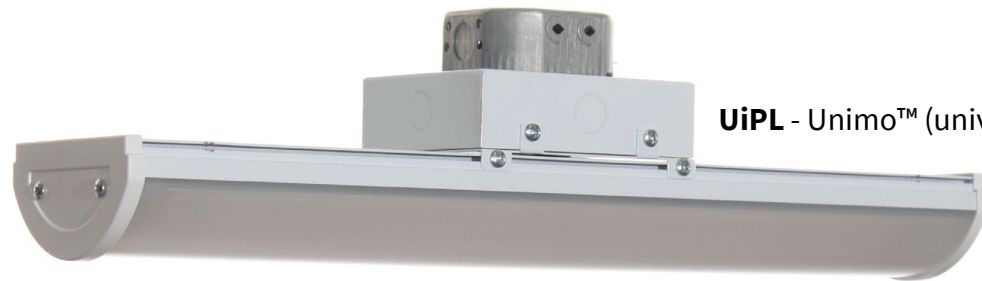
AFFORDABLE EFFICIENT LIGHTING SOLUTIONS

Visit www.BLU-Ecosystem.com for more information.



NOMENCLATURE						
FAMILY SERIES	LUMENS	CCT	VOLTAGE	DRIVER	SENSOR	ACCESSORIES
i6 - iPaRK 6™	7K - 7000	5 - 5000K	1 - 120/277V C - 120/347V	SB - BLU Ecosystem™	MW - MICROWAVE	UiPL - Unimo™ Universal Mounting Bracket

iPaRK 6™ Dimensions		
SIZE	LUMENS	BLU Ecosystem™
2FT	7000	50W



UiPL - Unimo™ (universal mounting bracket)



J2 Light Inc.® Version 220207

Contact your local supplier or representative or call J2 Light Inc. direct at:

1.888.LOW.WATT (569.9288) www.J2LIGHT.com

EFFICIENT.CLEAN.AFFORDABLE

